



# Programmatic Strategy **CARE COLOMBIA**

2023 - 2027





## **1** Country Context

---

## **2** Added value of CARE Colombia

---

## **3** Mission, vision and institutional approach

Theory of change CARE Colombia

---

## **4** Territories of intervention

Impact populations

---

## **5** CARE programs

---

## **6** Peace-building and violence-free communities

---

## **7** Leader and resilient communities in face of emergencies

---

## **8** Empowered communities achieving economic justice

---

## **9** Sustainable communities adapted to climate change



# Context



## Humanitarian crisis and armed conflict

- ▶ Colombia is the main destination of the Venezuelan population in Latin America and the Caribbean, currently registering some 2.48 million people in its territory.
  - ▶ Colombia faces different humanitarian crises caused by the increase in the situation of internal conflict, displacement in the region, risks and natural disasters.
- Humanitarian crises are exacerbated by violence associated with the expansion and disputes of various non-state armed groups in some parts of the national territory,
- ▶ disasters and climate events, the backwardness of the COVID-19 pandemic, and the increase in transcontinental migration flows of different nationalities.



## Economic situation

- ▶ Productivity dynamics have slowed economic growth over the past twenty years, rural areas have been largely affected by access to fair and decent livelihoods to overcome poverty.
- ▶ The inequality of income and informality in the labor market is evident, which is going to increase due to the loss of learning due to the closures of schools and distance learning during the pandemic.
- ▶ While income inequality is projected to decline, it is projected to remain above (already high) pre-pandemic levels. According to the IMF, Colombia will not grow less than 3.3% until 2023 and will gradually improve later.



## Social situation

- ▶ The United Nations Office for the Coordination of Humanitarian Affairs (OCHA) reported that the number of people displaced by violence in Colombia had increased by 196% as of November 2021.
- ▶ According to data published by the Observatory of Femicides in Colombia, the number of cases of femicide in the last three years was 1,881.
- ▶ In Colombia 32% of the population is rural and occupy 94.4% of the national territory, its economy is based on community or family agricultural production. They face several challenges: Conflict over land, ownership or control of it, weakened governance system for rural communities to participate in decision-making which limits individual, social and collective capacities, and the increase in poverty and violence against women.



## Political situation

- ▶ In June 2022, presidential elections were held in Colombia in which Gustavo Petro assumed the presidency and whose main priorities are peace building, social justice, environmental justice and change for women.

# Added value of CARE Colombia



## Alignment with the priorities of the new national government

CARE Colombia is able to propose, coordinate and articulate interventions that promote gender equality, economic justice for women, humanitarian action and climate justice as priority axes to address poverty and social injustice in the country.



## Experience in applying the double and triple nexus approach

A nexus approach ultimately aims to meet needs by addressing the root causes of poverty, vulnerability, fragility and conflict. Due to increasing needs and limited resources, CARE Colombia has capitalized on significant experience in integrating humanitarian aid with development (dual nexus) and considering the internal conflict can project its intervention and integrate peace/security under a triple nexus approach.



## Reference organization in humanitarian response

Since the beginning of its actions in the country, CARE Colombia has been configured as a "rapid" response organization in emergency contexts, guaranteeing the gender approach in emergencies.



## Advocacy and political influence

CARE Colombia has developed proven and successful methodologies to generate evidence-based information that can advise decision makers, through the promotion of voice, leadership and support for women and girls in all their diversity.



## Localization

CARE recognizes civil society as a central actor to ensure structural changes proposing to work with local organizations lead by women and social movements. The objective is to support their agenda and as an international actor, to amplify their advocacy for their rights, from an anti-colonial and anti-racist perspective.



## Attention and response to gender-based violence

Due to the persistence of a xenophobic, sexist, patriarchal and racist cultural matrix, CARE has the opportunity to influence with the objective of modifying structures, especially those that exacerbate gender-based violence.

# Mission, vision and organizational approach



## Vision

We seek a world full of hope, inclusion and social justice, where poverty has been overcome and where all people live in dignity and security.

## Mission

Save lives, defeat poverty and achieve social justice.



## Approach

We place women and girls at the center of our efforts because we know that we cannot overcome poverty until all people have equal rights and opportunities.

## Theory of Change



### Build agencies

Vulnerable communities, especially women and girls, strengthen their capacities for peace building and equality, access prevention and care services in case of emergencies, acquire skills to access livelihoods, face the challenges and risks of climate change.



### Changing Relations

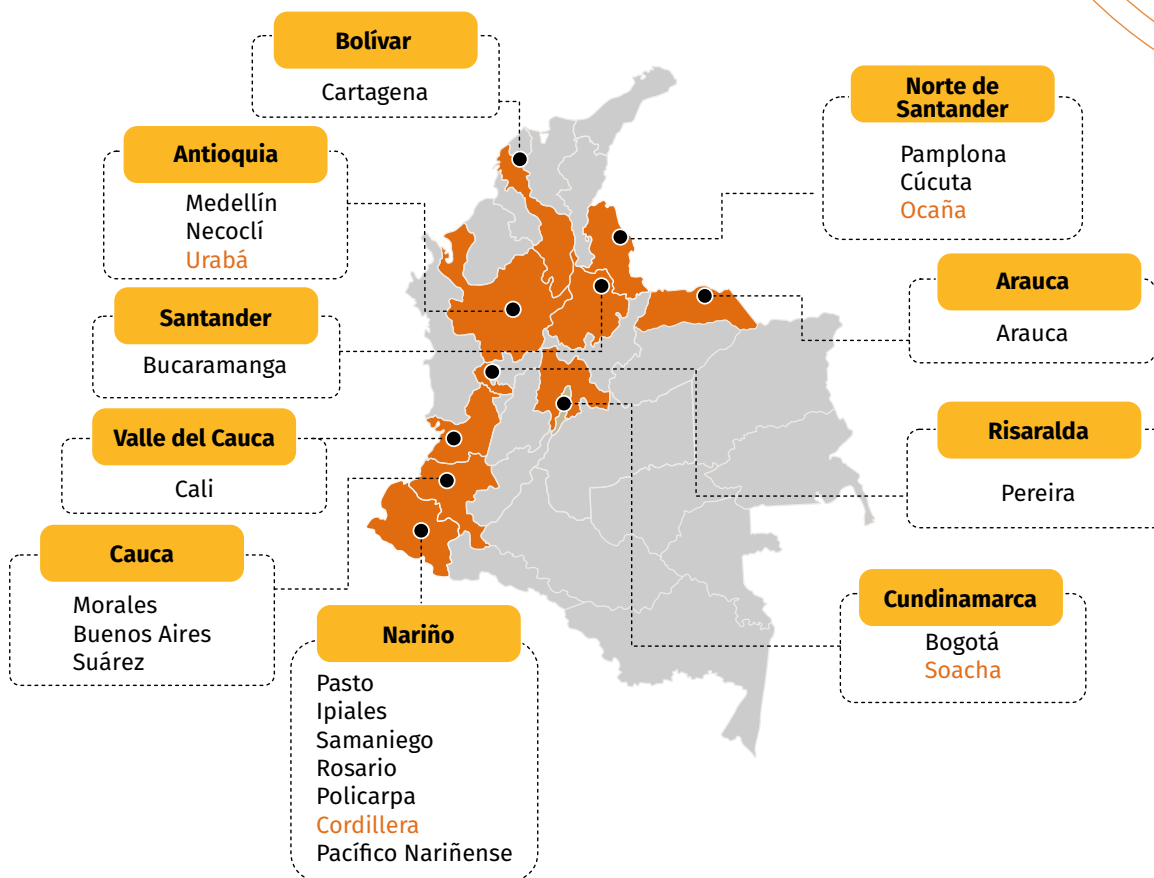
Vulnerable communities, especially women and girls, position their voice and leadership and actively participate in family collective and institutional decision-making to promote participatory and inclusive environments.



### Transform structures

Local governments, national governments with the participation of civil society and private companies, design and implement actions for the change of social norms, guidelines and policies that facilitate a dignified life and social justice in Colombia.

# Territories of intervention



## Impact populations

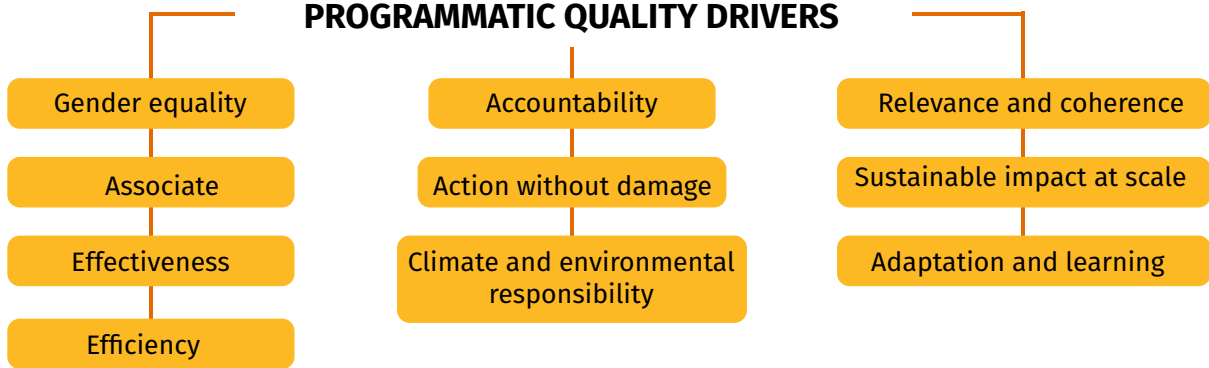


- ▶ Women, children and adolescents in vulnerable situations affected by situations of conflict and violence, especially GBV.
- ▶ Men and boys in vulnerable situations who reproduce sexist and patriarchal practices.
- ▶ People in vulnerable situations (mainly women and girls), migrants, refugees, internally displaced persons and people suffering the impacts of risks and disasters.
- ▶ Women and youth in vulnerable situations impacted by precarious labor policies and limited access to livelihoods.
- ▶ Women, rural youth and peri-urban in vulnerable situations, who face the challenges and risks of climate change.
- ▶ Women, rural youth and peri-urban in vulnerable situations, who face the challenges in accessing food security.

# CARE Programs



## PROGRAMMATIC QUALITY DRIVERS



## STRATEGIES





# 1. Impact Areas: Peace-building and violence-free communities

Strengthen the capacities of people affected by the internal conflict, organizations led by women, and institutions to promote social commitment and the construction of a culture of peace, through attention to and prevention of all types of violence and changes in social norms that promote development and a life free of violence.

## AGENCY

Vulnerable communities strengthen their capacities, acquire tools for peace building and gender equality in environments affected by situations of violence.

## RELATIONS

Communities affected by situations of violence exercise their active citizenship in the formulation, adaptation, and oversight of processes, policies, and social norms aimed at peace building and gender equality.

## STRUCTURE

Local, departmental and national governments design, adapt and implement protocols, guidelines and routes for the construction of peace, the prevention and attention of violence with a gender focus.

GOAL BY 2027

# 19,676

PEOPLE HAVE BEEN SERVED  
WITHIN THE FRAMEWORK  
OF THIS PROGRAM



Peace education.

Prevention, care and reparation for people who have been forcibly recruited.

Strengthening the social fabric for peace

Work on processes of transformative masculinities for the change of social norms and norms.

Prevention and attention to gender-based violence oriented to development projects.

## CARE INTERNATIONAL INDICATORS

**4** # and % of women and girls accessing gender-based violence response services.

**9** % of people report that they can work collectively with others in the community to achieve a common goal.



## 2. Impact Areas: Communities that are leaders and resilient to emergencies

Saving lives, preventing and alleviating human suffering for people affected by crises and disasters, by providing them with access to vital resources such as water, food, food, and food. Medical and protective services and income to meet humanitarian needs and support their transition and integration into host communities from a gender and protection approach.

### AGENCY

Vulnerable communities access preventive, preparedness, response and early recovery services in the protection and health sectors to increase individual and collective empowerment and resilience.

### RELATIONS

Communities affected by mixed migration, armed conflict and natural disasters, actively participate in the design, implementation and evaluation of humanitarian response interventions (health and protection).

### STRUCTURE

Local, departmental and national governments as well as actors of the humanitarian response system, design and implement guidelines, protocols and actions for prevention, preparedness response and early recovery to manage crises, and disasters with a gender focus.

GOAL BY 2027

**180.000**

PEOPLE HAVE BEEN SERVED UNDER THIS PROGRAM



Implement the gender approach in emergency

Protection sector (prevention and attention to gender-based violence and Child protection).

Health sector, with emphasis on health and sexual and reproductive health in emergencies

Livelihood recovery

Advocacy for the enforceability of rights of people affected by crises and disasters

### CARE INTERNATIONAL INDICATORS

**4.** # and % of women and girls accessing gender-based violence response services.

**8.** % of people who claim to have a high self-efficacy

**20.** # And % of persons (as % of persons in need, where appropriate) who obtained (directly or indirectly) humanitarian support and/or protective services provided by CARE and its partners, in line with global standards of quality and life-saving assistance.

# 3. Impact Areas: Empowered communities achieving economic justice

Strengthen the skills of the most vulnerable population for access to productive and financial factors that boost their economic activities and guarantee livelihoods in recognition of labor rights, decent working conditions and equitable care systems.

## AGENCY

Vulnerable communities access strengthening and support for livelihood access, financial inclusion and fair care systems to ensure their personal and economic empowerment.

## RELATIONS

Vulnerable communities position their voice and leadership in the generation of policies and regulations that promote inclusive markets and economic autonomy.

## STRUCTURE

Local and national governments, with the participation of private companies, design and implement guidelines and policies that allow for decent working conditions and sustainable economic autonomy.

GOAL BY 2027

# 6.294

PEOPLE HAVE BEEN SERVED UNDER THIS PROGRAM



Strengthening paid and unpaid care systems

Promotion of individual empowerment through financial education processes

Promotion of individual and collective economic empowerment, through employability, entrepreneurship promotion and vsla

Strengthening of productive agro ecological chains, through the strengthening of associativity

Advocacy actions with the central government and local governments for the enforceability of economic and labor rights.

## CARE INTERNATIONAL INDICATORS

**1.** % of women and girls who report having confidence in their own negotiation and communication skills.

**9.** % of people who report that they can work collectively with others in the community to achieve a common goal.

## 4. Sustainable communities adapted to climate change

Support communities and decision-makers to address vulnerabilities and main causes related to the adverse effects of climate change and food insecurity of communities and ecosystems at greatest risk.

### AGENCY

Vulnerable communities have access to sustainable solutions to face the challenges and risks of climate change and promote their food security and sovereignty

### RELATIONS

Vulnerable communities face the challenges and impacts of climate change through active participation in the design, implementation of sustainable solutions to promote food security and sovereignty.

### STRUCTURE

Local, departmental and national governments with the participation of private actors, guarantee policies and regulations that face the impacts of climate change and promote food sovereignty and security.

GOAL BY 2027

**12.016**

PEOPLE HAVE BEEN ASSISTED UNDER THIS PROGRAM



Conservation and restoration of ecosystems, through capacity-building actions for the adoption of climate change mitigation and adaptation measures

Promotion actions to contribute to ensuring food security.

Advocacy actions with the central government and local governments for the enforceability of territorial and environmental rights.

### CARE INTERNATIONAL INDICATORS

**8.** % of people who report having high self-efficacy.

**9.** % of people who report that they can work collectively with others in the community to achieve a common goal.

**28.** # and % of people of all genders who have used their increased capacities for resilience and adaptation to the effects of climate change. [[Linked to SDG indicator 13.1](#)]



**care**®

**Defending dignity  
Fighting poverty**

---

 [www.carecolombiaong.org](http://www.carecolombiaong.org)

    [@carecolombiaong](https://www.instagram.com/carecolombiaong)